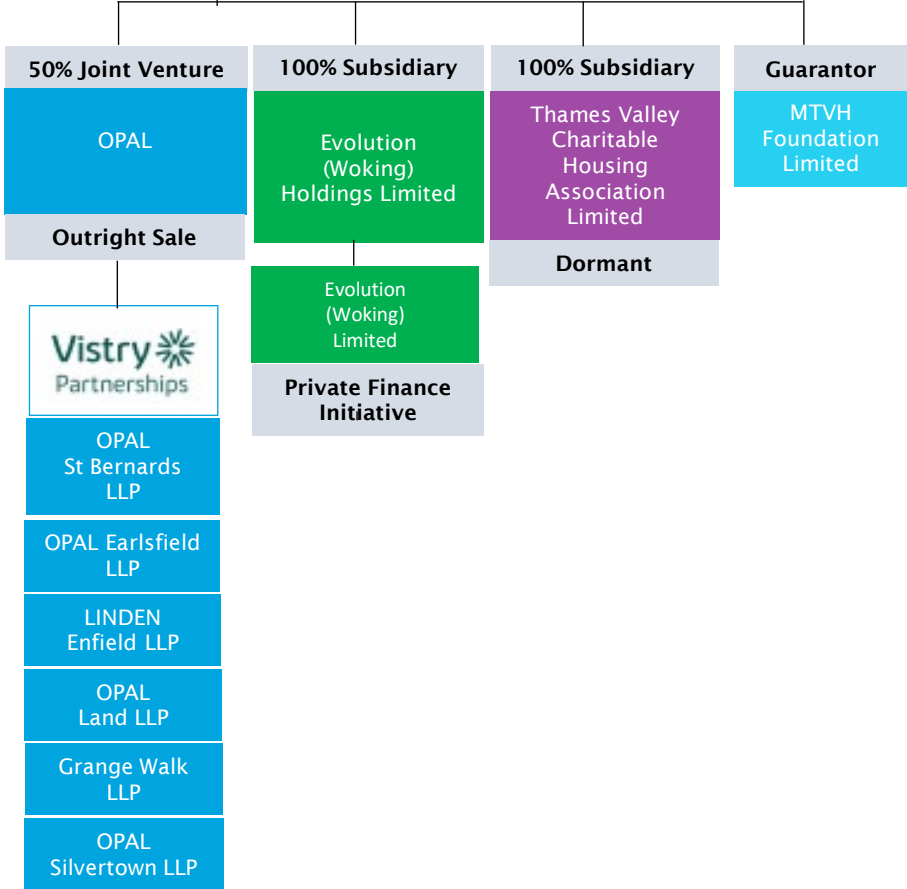


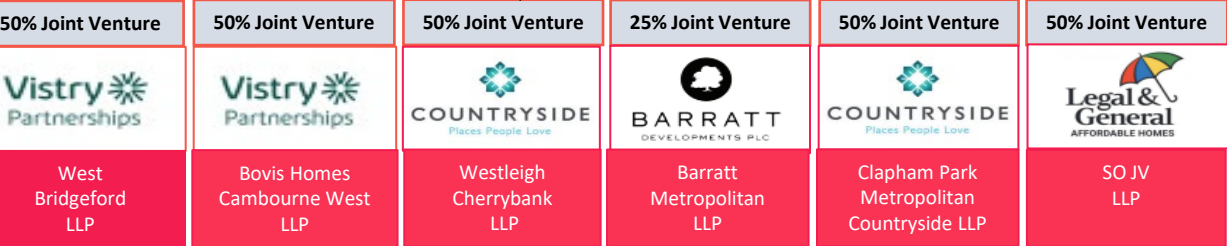
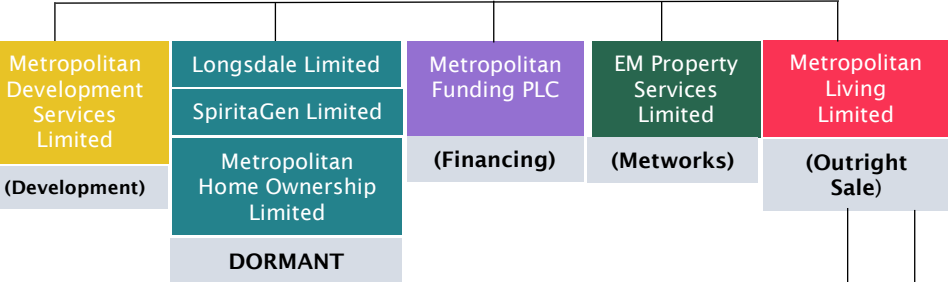
# Metropolitan Thames Valley

**Thames Valley Housing Association Limited (TVHA)**  
 Community Benefit Society, Registration Number 17375R, registered provider LCHO (1<sup>st</sup> Tranche), keyworker, student

**100% Subsidiary**  
**Metropolitan Housing Trust Limited**  
 Charitable Community Benefit Society, Registration Number 16337R, registered provider, authorised and regulated by the FCA.  
 LCHO (1<sup>st</sup> Tranche and residual), affordable and social rent, supported housing.



95%  
 PRS Services Management LLP  
 5%



West Hendon Service Charge Endowment